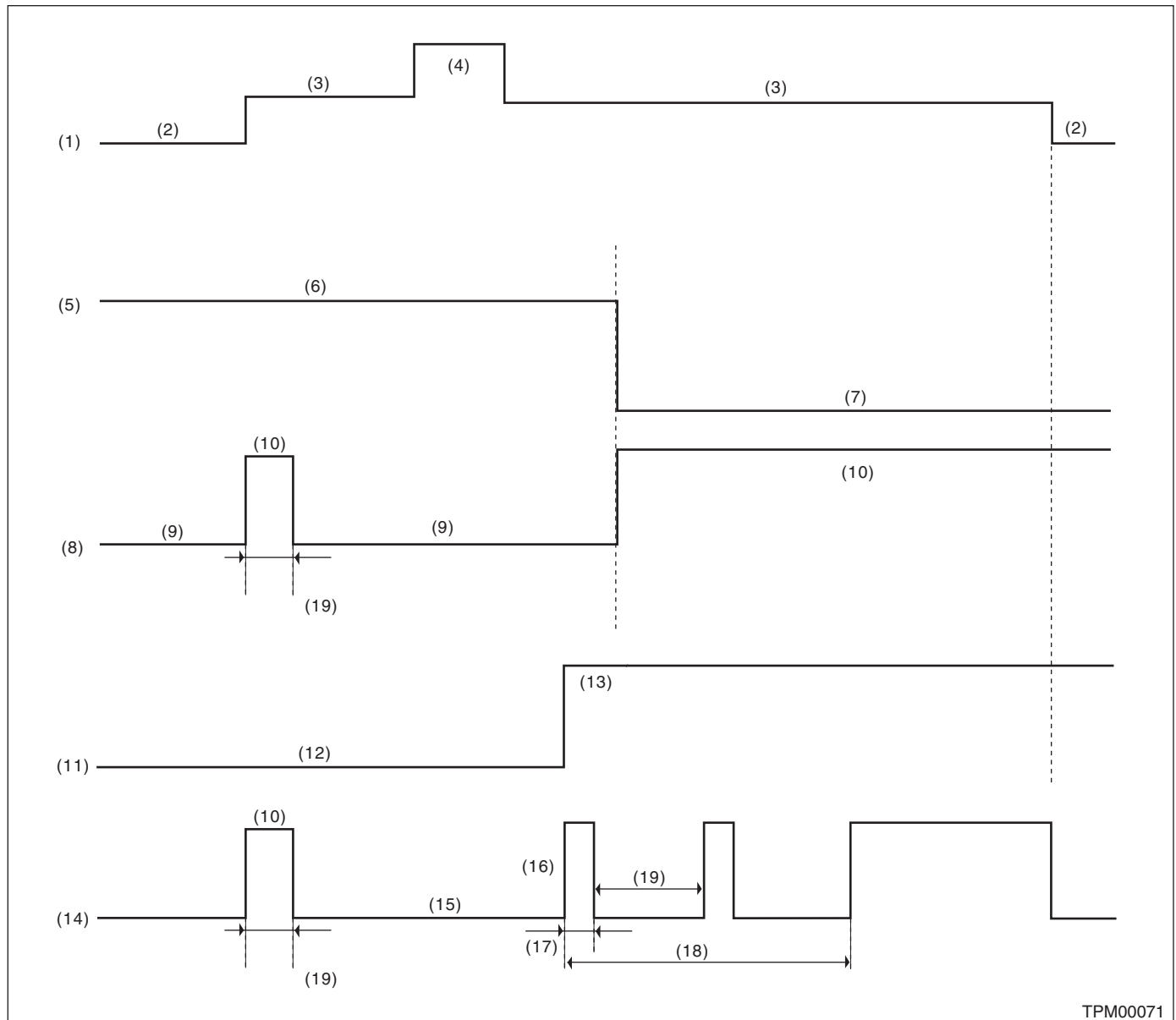


12. Tire Pressure Warning Light / Trouble Indicator Light Illumination Pattern

A: INSPECTION



TPM00071

- | | | |
|---|--|----------------------|
| (1) Ignition switch | (8) Tire inflation pressure warning light (pressure condition) | (15) Light OFF |
| (2) OFF | (9) Light OFF | (16) Blink |
| (3) ON | (10) Light ON | (17) 1 second |
| (4) Start | (11) System status | (18) Blinks 25 times |
| (5) Tire inflation pressure condition | (12) Normal | (19) 2 seconds |
| (6) Meet the specification | (13) Malfunction | |
| (7) Less than standard value (For the pressure warning level, refer to "CURRENT DATA".) <Ref. to TPM(diag)-13, LIST, Read Current Data.> | (14) Tire inflation pressure warning light (system condition) | |

Tire Pressure Warning Light / Trouble Indicator Light Illumination Pattern

TIRE PRESSURE MONITORING SYSTEM (DIAGNOSTICS)

1) When the tire pressure warning light does not illuminate in accordance with this illumination pattern, there must be an electrical malfunction.

2) If the tire pressure warning light does not go off, check the TPMS & keyless entry CM or TPMS CM/warning light circuit and the combination meter circuit. <Ref. to TPM(diag)-18, TIRE PRESSURE WARNING LIGHT DOES NOT COME OFF, Tire Pressure Warning Light / Trouble Indicator Light Illumination Pattern.>

NOTE:

If the problem is fixed while driving at approximately 40 km/h (25 MPH) after the tire pressure warning light blinks/lights, the warning light goes out and the tire pressure monitor system operates normally. (If there is a decrease in tire pressure, or a malfunction of the system, the malfunction history is displayed.)

B: TIRE PRESSURE WARNING LIGHT DOES NOT COME ON

DETECTING CONDITION:

Defective combination meter

TROUBLE SYMPTOM:

When the ignition switch is turned to ON, the tire pressure warning light does not turn on (for approx. 2 seconds).

| Step | Check | Yes | No |
|---|--------------------------------------|--|--|
| 1 CHECK DIAGNOSTIC TROUBLE CODE (DTC). Connect the Subaru Select Monitor, and read the Diagnostic Trouble Code. <Ref. to TPM(diag)-11, OPERATION, Read Diagnostic Trouble Code (DTC).> | Is diagnostics code (DTC) displayed? | Perform the diagnosis according to the DTC. <Ref. to TPM(diag)-21, List of Diagnostic Trouble Code (DTC).> | Replace the combination meter. <Ref. to IDI-13, REMOVAL, Combination Meter.> |

C: TIRE PRESSURE WARNING LIGHT DOES NOT COME OFF

DETECTING CONDITION:

- Defective combination meter
- Tires pressure drop
- Transmitter ID not registered

TROUBLE SYMPTOM:

Tire pressure warning light remains illuminating after engine starts.

| Step | Check | Yes | No |
|--|-----------------------------------|--|--|
| 1 CHECK DTC. Connect the Subaru Select Monitor, and read the Diagnostic Trouble Code. <Ref. to TPM(diag)-11, OPERATION, Read Diagnostic Trouble Code (DTC).> | Is a DTC displayed? | Perform the diagnosis according to the DTC. <Ref. to TPM(diag)-21, List of Diagnostic Trouble Code (DTC).> | Go to step 2. |
| 2 CHECK TRANSMITTER (ID). Display the transmitter ID of the tire pressure monitor system. | Is the transmitter ID registered? | Go to step 3. | Register the transmitter ID. <Ref. to TPM(diag)-14, OPERATION, Register Transmitter (ID).> |
| 3 CHECK TRANSMITTER DATA OUTPUT. 1) Select data display of the tire pressure monitoring. 2) Start the engine and check the tire pressure warning light output. | Is the warning light output ON? | Replace the TPMS & keyless entry CM or TPMS CM. <Ref. to WT-9, Tire Pressure Monitoring System.> | Replace the combination meter. <Ref. to IDI-13, REMOVAL, Combination Meter.> |

Tire Pressure Warning Light / Trouble Indicator Light Illumination Pattern

TIRE PRESSURE MONITORING SYSTEM (DIAGNOSTICS)

D: TIRE PRESSURE WARNING LIGHT IS 25 TIMES BLINKING AND TURN ON DETECTING CONDITION:

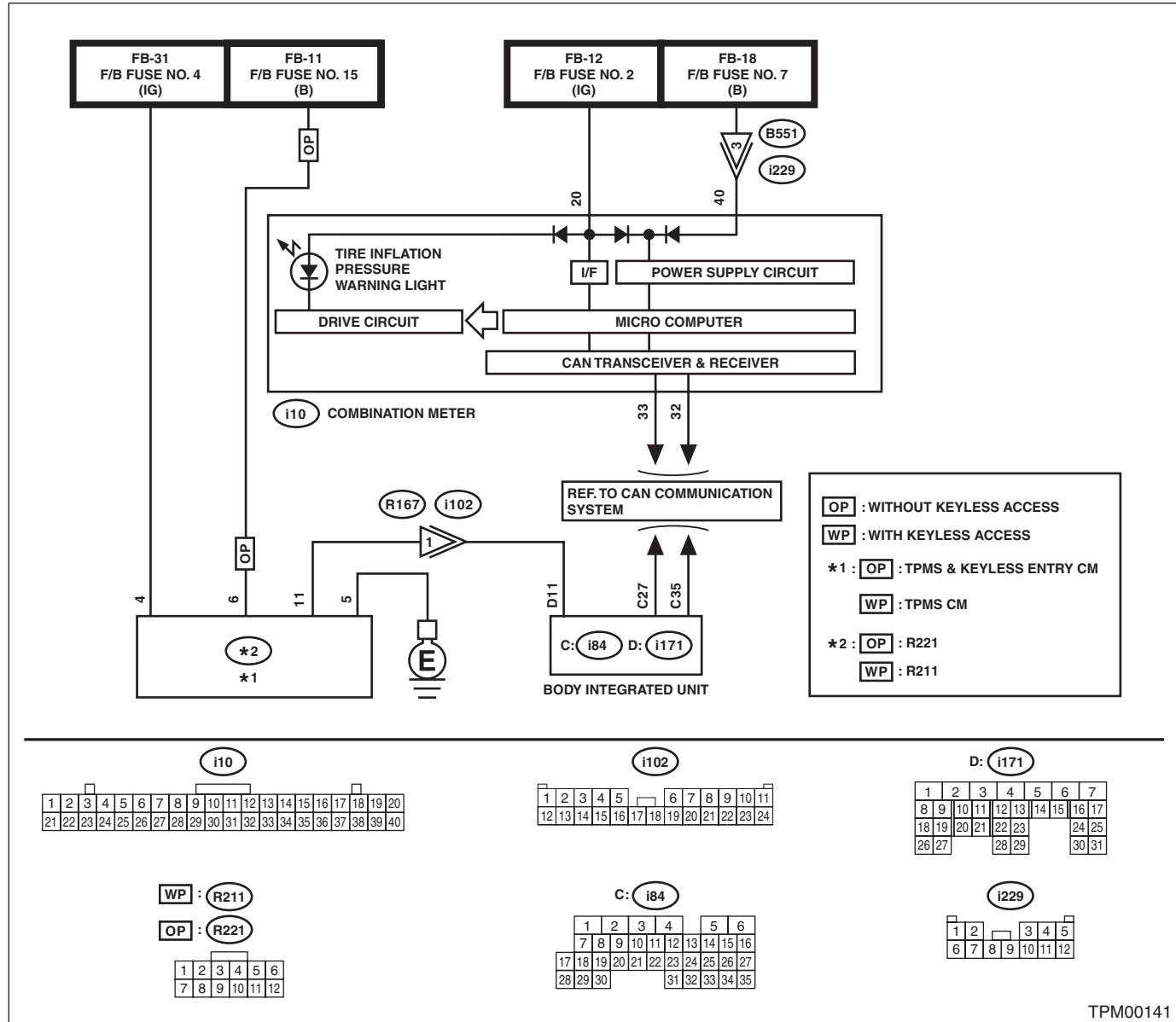
- Defective TPMS & keyless entry CM or TPMS CM
- Defective harness
- Transmitter is faulty.

TROUBLE SYMPTOM:

Every time the engine starts, tire pressure warning light blinks 25 times and then illuminates.

WIRING DIAGRAM:

Tire Pressure Monitoring System <Ref. to WI-403, WIRING DIAGRAM, Tire Pressure Monitoring System.>



TPM00141

| Step | Check | Yes | No |
|------|--|--|---------------|
| 1 | CHECK DTC. Connect the Subaru Select Monitor, and read the Diagnostic Trouble Code. <Ref. to TPM(diag)-11, OPERATION, Read Diagnostic Trouble Code (DTC).> | Is diagnostics code (DTC) displayed? Perform the diagnosis according to the DTC. <Ref. to TPM(diag)-21, List of Diagnostic Trouble Code (DTC).> | Go to step 2. |

Tire Pressure Warning Light / Trouble Indicator Light Illumination Pattern

TIRE PRESSURE MONITORING SYSTEM (DIAGNOSTICS)

| | Step | Check | Yes | No |
|---|--|--|--|---|
| 2 | CHECK LAN COMMUNICATION. Inspect LAN system. <Ref. to LAN(diag)-2, PROCEDURE, Basic Diagnostic Procedure.> | Is there any fault? | Repair it according to the diagnosis for LAN system. | Go to step 3. |
| 3 | CHECK HARNESS. Measure the resistance between TPMS & keyless entry CM or TPMS CM and body integrated unit. Connector & terminal Without keyless access (R221) No. 11 — (i171) No. 11: With keyless access (R211) No. 11 — (i171) No. 11: | Is the resistance less than 10 Ω ? | Go to step 4. | Repair the harness. |
| 4 | CHECK CONNECTOR. Check each connector. | Is there poor contact or any other faults? | Repair the connector. | Replace the TPMS & keyless entry CM or TPMS CM. <Ref. to WT-9, Tire Pressure Monitoring System.> |